

ActiveBatch®

Redefining IT Automation

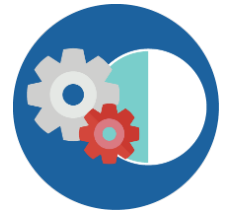
Overcoming Complexity: An Overview



Computing economics have resulted in rapid growth in computing resources. To remain competitive, business is pushing for new and more reliable applications, as well as more frequent changes to existing applications, to be deployed faster. At the same time, IT budgets reflect little to no growth, and IT staffing is lagging behind because of lack of available trained resources.

Taking a Layered, Architectural Approach to Automation

Driven by these marketplace demands, as well as rapidly evolving IT landscapes and new regulatory requirements, IT organizations are driven to automate increasingly complex processes. But traditional forms of automation involving heavy reliance on custom scripting or application-specific scheduling tools just add to the complexity. According to Gartner research, most organizations have between 3 and 8 different automation tools in place, which adds to the pressure with the dilution of resources (both human and budget) as well as the operational confusion of having to manage multiple automation systems. IT organizations need a solution that addresses different layers of automation, such as Workload Automation, IT Process Automation, Big Data Automation, Managed File Transfer Automation, and more.



ORGANIZATIONS ARE DISCOVERING THAT YOU CAN'T SOLVE COMPLEXITY WITH MORE COMPLEXITY.

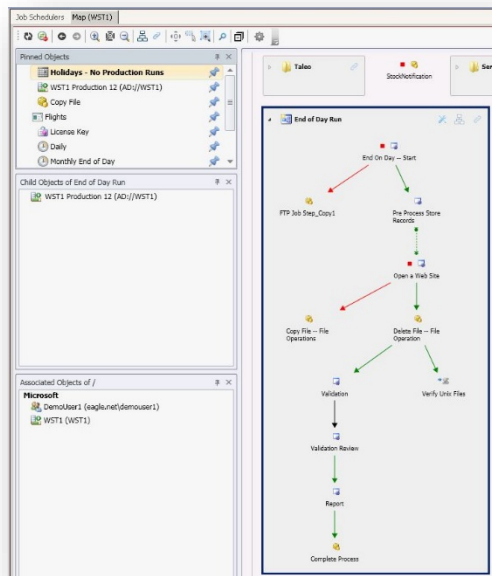
THE SOLUTION IS A LAYERED, ARCHITECTURAL IT AUTOMATION STRATEGY.



Advanced Systems Concepts, Inc. is Redefining IT Automation with its industry-leading enterprise IT automation solution, ActiveBatch®. **ActiveBatch coordinates and consolidates silos of automation within a single framework**, giving businesses the agility they need. ActiveBatch's unique capabilities – its scalable, powerful automation engine, rich content library, and intuitive workflow design and assembly – are designed to accommodate changing business and IT requirements. As a result, organizations can improve IT agility and reduce the cost of change with a layered, architectural automation strategy.

www.ActiveBatch.com

ASCI ADVANCED
SYSTEMS CONCEPTS, INC.



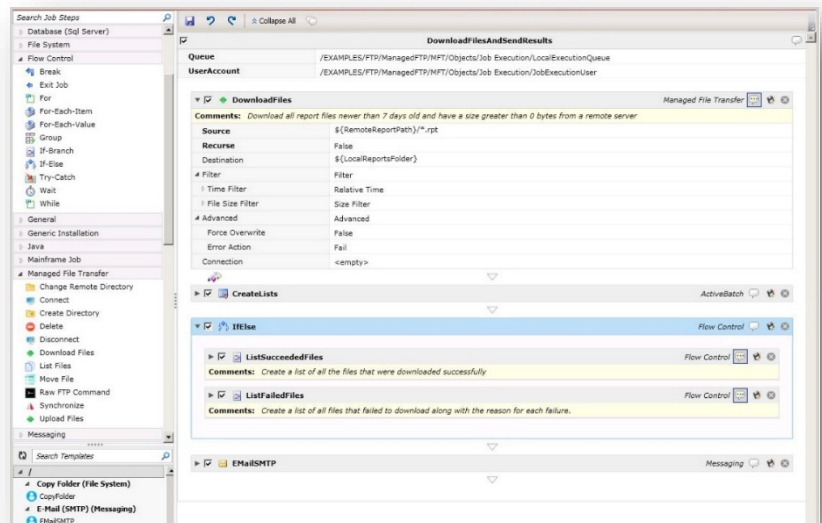
ActiveBatch Map View, a graphical display and dynamic development environment.

The Integrated Jobs Library contains integrations for a wide-range of third-party applications, databases, and computing platforms. The ActiveBatch **Service Library** extends the power of the Integrated Jobs Library with full API accessibility that allows users to create reusable Job Steps from WSDLs, REST services, and more.

Build & Automate Reliable End-to-End Workflows in Half the Time

ActiveBatch provides a flexible, real-time graphical display and dynamic development environment with **Map View**. Map View is a centralized, 360-degree interface that allows users to build, design, modify, schedule, and trigger workflows all from a single pane for improved workflow management.

ActiveBatch helps IT organizations reduce their dependency on custom scripting with its innovative **Integrated Jobs Library**. The Integrated Jobs Library features a graphical, drag-and-drop workflow designer with hundreds of pre-built integrations for commonly-scripted actions/functions in a multitude of different automation areas including **workload, business and IT processes, managed file transfer, and big data**. The built-in, reliable logic of these functions allows for faster workflow creation by reducing the amount of time and effort developers would otherwise spend on research, designing, coding, and testing custom scripts, enabling a shift in focus to function, rather than coding.



ActiveBatch Integrated Jobs Library Drag-and-Drop Workflow Designer

Protect Your Existing Script Investment

The function of an IT Automation solution is to simplify and enhance coding, not replace it. Most organizations have a significant investment in scripts that were written for specific products, applications, or services. ActiveBatch helps organizations protect their existing scripts with **script vaulting and lifecycle management capabilities**. ActiveBatch serves as a central library for all scripts and provides an audit trail of all revisions made to scripts (with revision rollback options) so that users can easily track changes and restore to a previous version. ActiveBatch is a script-language independent solution with support for all scripting languages.

Create and Maintain Workflows Faster & More Reliably

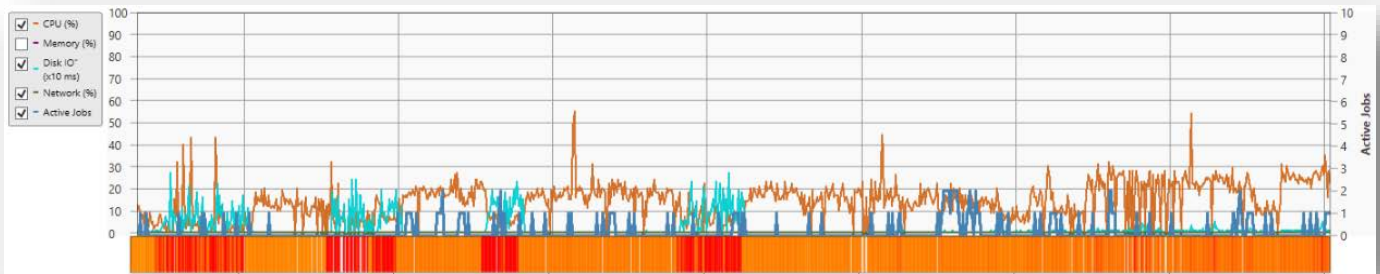
ActiveBatch's **Reference Objects** allow hundreds or even thousands of Reference Jobs to mimic the same logic of an original Template Job. This means that a single change to the Template Object will automatically be passed down to each Reference without the need for further action or cut-and-paste. References provide for faster and more reliable workflow creation, as well as simplified maintenance of these Objects going forward.

Event Automation Equals Real-Time Automation

ActiveBatch makes use of an **event-driven architecture** to effectively manage business and IT processes based on near real-time requirements. ActiveBatch's event automation supports a series of actions to be taken on a wide array of occurrences including email, file events, an event on an FTP server, message queues, Web Services, SAP, ServiceNow and more.

Just-In-Time Provisioning & Performance Monitoring for On-Premise & Cloud/Virtual Systems

ActiveBatch **Smart Queue** and **Managed Queue** tools allow organizations to automatically provision and de-provision resources across virtual and cloud systems; ActiveBatch can spin up more machines when more computing power is needed as well as spin down machines during idle times. Additionally, ActiveBatch's **Machine Load View** provides users with a visual heat map containing refined performance graphs so users can easily identify system usage for improved resource optimization. These features help organizations accommodate unexpected workload demands and reduce virtual/cloud machine waste.



Machine Load provides an understanding and accounting of how systems are being utilized by both ActiveBatch and non-ActiveBatch processes with performance counters and a visual heat map.

Mitigate Risk & Retain Control with Governance & Security

ActiveBatch promotes **policy-driven governance** through the organization with a comprehensive automation framework that supports **auditing, revision history, changesets, policy authorizations, advanced SLA management**, and more. In combination, these features provide an authoritative source to know exactly what's running and when, with the ability to easily control and monitor the status and security of workflows, within a single pane of glass.

ActiveBatch's **security-driven automation** model leads the market in delivering enterprise-wide secure automation by preventing unauthorized access to systems and data. ActiveBatch fully supports the Windows security model, including Kerberos and Active Directory, allowing organizations to make use of their existing accounts and groups for simpler management and security of users and groups.

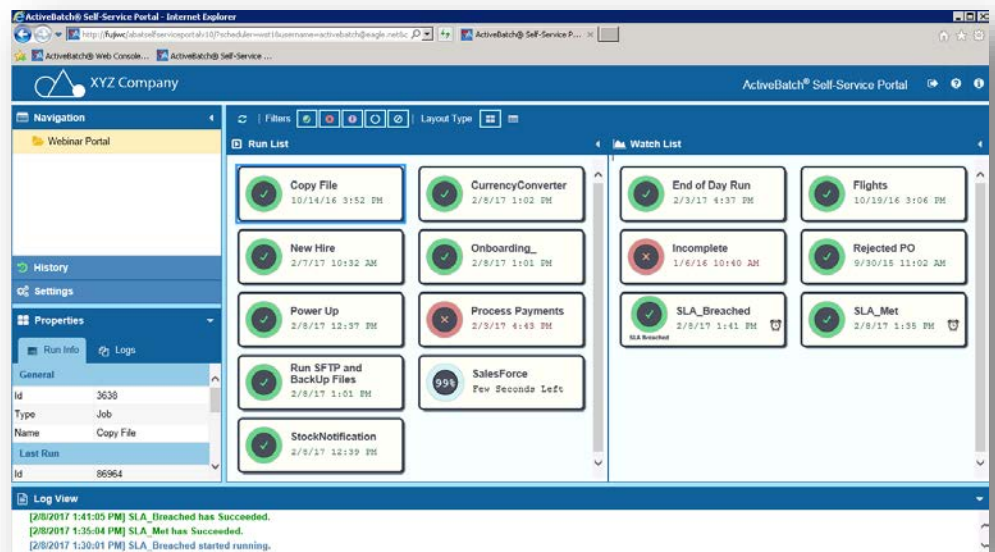
Actionable Reporting, Analytics, & Business Intelligence

ActiveBatch supports a variety of **built-in and custom reporting tools** which enable organizations to deliver information to end users quickly and in multiple formats for improved decision making. ActiveBatch provides multiple specialized views for both Developers and Operations so that users can target and analyze data based on functional areas.

Flexible On-Premise & Web Options

In addition to its high-performing thick client, ActiveBatch offers **ActiveBatch Web Console**, which provides access to nearly all thick client capabilities, allowing users the ability to monitor and manage their automation environments from their favorite browsers anywhere in the world.

ActiveBatch Self-Service Portal provides non-IT users (business users, help desk teams, etc.) the ability to run and monitor their approved workflows without the day-to-day involvement of IT, while leaving IT in full control of jobs, privileges, and security.



ActiveBatch Self-Service Portal

ActiveBatch Extensions

ActiveBatch Extensions offer enhanced functionality that integrates third-party applications and technologies with existing functions in the Integrated Jobs Library and Service Library.

- Amazon EC2
- Hadoop Ecosystem
- IBM Cognos BI
- IBM InfoSphere DataStage
- IBM PureData System (Netezza)
- Informatica Cloud
- Informatica PowerCenter
- Microsoft Azure
- Microsoft Dynamics AX
- Microsoft SharePoint
- Microsoft System Center
 - Configuration Manager
 - Operations Manager
 - Orchestrator
 - Service Manager
 - Virtual Machine Manager
- Microsoft Team Foundation Server
- Oracle E-Business Suite
- Oracle PeopleSoft
- SAP NetWeaver BW
- SAP BusinessObjects Data Services
- ServiceNow
- Teradata
- VMware

ActiveBatch Service Library & Full API Accessibility

The ActiveBatch Service Library enables users to consume WSDLs, REST services, and more, turning them into reusable Job Steps within ActiveBatch and allowing users to create workflows faster without the need for custom coding. Included are:

- Web Services
- RESTful Services
- .Net Assemblies
- Stored Procedures
- Command Line Interface

ActiveBatch Add-Ins

Additional capabilities that can customize and enhance your use of ActiveBatch IT Automation:

- ActiveBatch Web Console
- ActiveBatch Self-Service Portal
- ActiveBatch Mobile
- Non-Cluster Failover for High Availability
- Web Services API
- Host-Based Licenses
- Management Packs
 - Microsoft System Center Operations Manager
 - Nagios
 - Zenoss



Learn More About ActiveBatch >>
www.ActiveBatch.com | +1 (973) 539-2660 | info@advsyscon.com



Advanced Systems Concepts, Inc. (ASCI) is a recognized leader in the IT Automation industry by analysts including Gartner, Forrester, and EMA. Trusted by over 2000 customers in 50 countries worldwide, ASCI has been developing cutting-edge products across the breadth of customer markets for more than 35 years.